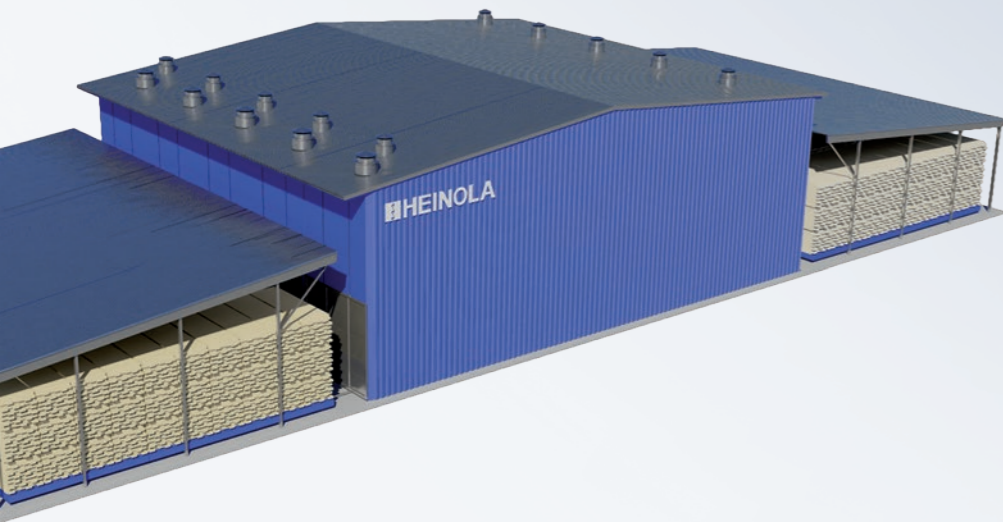


HEINOLA

drying kilns



2016 edition

THE EXPERTS OF THE HEINOLA
DRYING KILN TEAM HAVE
HELPED DELIVER

5000

drying kilns



DELIVERY TIME
6 MONTHS



FLEXIBLE AND CUSTOMER-
ORIENTED SOLUTIONS



A MAXIMUM ANNUAL
DRYING KILN CAPACITY
OF UP TO 80.000 M³



ENERGY-EFFICIENT
KILNS



AUTOMATED SYSTEMS WITH
REMOTE CONNECTIONS

SEVEN SAWMILL GROUPS HAVE CHOSEN HEINOLA DRYING KILNS IN THE FIRST HALF OF 2016 – ADDING A TOTAL OF 31 DRYING KILN UNITS TO THE ORDER BOOK AND DRYING CAPACITY OF OVER ONE MILLION M³/ANNUM!

An ever-growing number of sawmills in the Nordic and Baltic countries and Russia have chosen HEINOLA's drying kilns and advanced HEINOLA drying kiln automation technology, into which the Laatumkamari Opti@ Drying Kiln Simulator can be integrated, which optimizes transfer of the inner moisture for the pieces to be dried as well as their shrinkage and drying tensions.

In the first half of 2016 announcements of forthcoming investments in HEINOLA drying kilns were made by Finnish wood processing industry companies ER-Saha Oy, JPJ-Wood Oy, UPM Timber (Kaukas sawmill), and Keitele Timber (Kemijärvi sawmill), as well as the Swedish Karl Hedin Group (Toftan sawmill), Swedish Moelven Notnäs AB and ULK Sawmill in Arkangelsk, Russia.

According to the customers, HEINOLA's drying kilns provide consistent high quality, the HEINOLA Eco Control System is particularly user-friendly, and HEINOLA's drying kiln equipment and structures are of excellent quality. Furthermore,

we are seen as a reliable supplier, offering good support services close to customers facilities. During 50 years of complex deliveries in sawmills HEINOLA has a unique knowledge of sawmill business. Sometimes HEINOLA delivers turnkey complete sawmills. This knowledge makes HEINOLA a very safe choice for customers.

The orders placed in the first half of 2016 comprise nine (9) fully-automated 2-stage HFB Progressive kilns and six (6) fully-automated 2-stage HTC Progressive kilns. Additionally, on the Chamber kilns front, our order book features a total of six (6) drive-through HCHD Chamber kilns with carts, six (6) drive-through HCHD Chamber kilns with roller tracks, and four (4) forklift loaded HCH Chamber kilns. All this comes to a total of 31 drying kiln units and drying capacity over one million m³ per annum ordered during the first half of the year!

Heinola Sawmill Machinery Inc. would like to thank our customers for their confidence in us; we intend to continue our long-term focus on ensuring proper drying quality.

KUHMO OY, KUHMO, FINLAND: HEINOLA's 2-stage HTC kiln with an annual capacity of 35.000 m³. The drying kiln can dry freshly sawn 16–50 mm pine and spruce timber to a final moisture content of 12–18%.

The new channel kiln is equipped with load presses, heat recovery systems, energy indicators and the new and advanced HEINOLA kiln automation system.



A SWEDISH FURNITURE MANUFACTURER'S PRODUCTION PLANT IN POLAND: Two fully-automated 2-stage HFB Progressive kilns, with a combined annual capacity of approx. 80.000 m³ when drying pine timber to a final moisture

content of 9%. The drying kilns are equipped with load presses, heat recovery systems, thermal and electric energy indicators, hot water spraying systems and advanced HEINOLA kiln automation system.



PRT WOOD OY, PYHÄNTÄ: two HCHE E-cart loaded chamber kilns, with a total annual capacity of approx. 15.000 m³ when drying 50 mm pine timber to a final moisture

content of 18%. The chamber kilns are equipped with load presses and hot water spraying systems and advanced HEINOLA kiln automation system.



HEINOLA

drying kilns



Karri Kiiskinen

THE DRYING KILN TEAM of Heinolas Sawmill Machinery has a long and extensive experience of the demanding production conditions of Nordic sawmill industry and the drying kiln solutions suitable for these conditions. Timber drying kilns have been part of the HEINOLA catalogue since 2010 and these solutions have already proven to be extremely popular.

The success of HEINOLA is based on the combination of expert project management and customer-orientated planning. With our own manufacturing plant, modern solutions, skilled staff and reliable partners, we can guarantee professional production processes, customer satisfaction and consistent service.

The story of HEINOLA began 50 years ago. We use the Team HEINOLA 50 Years of Taking Care slogan because it encapsulates our competitive and innovative solutions that assist our customers in the ever-changing market. HEINOLA takes care of its customers now and in the future. The HEINOLA Care service covers supply of spare parts and maintenance services from individual machines all the way to entire sawmill facilities.

INSTALLATION SITES OF HEINOLA DRYING KILNS IN 2016



ER-SAHA OY, VIITASAARI, FINLAND

Six drive-through
HCHD Chamber kilns



JPJ WOOD OY, KORKEAKOSKI, FINLAND

One automated 2-stage
HFB Progressive kiln



UPM KAUKAS SAWMILL, LAPPEENRANTA, FINLAND

Three automated 2-stage
HTC Progressive kilns



KEITELE TIMBER OY, KEMIJÄRVI SAWMILL, FINLAND

Three automated 2-stage
HTC Progressive kilns



HEINOLA

Heinola Sawmill Machinery Inc. • P.O.Box 24, FI-18101 Heinola, Finland
Telephone +358 3 848 411 • www.heinolasm.fi

